

920 FAIRGROUND

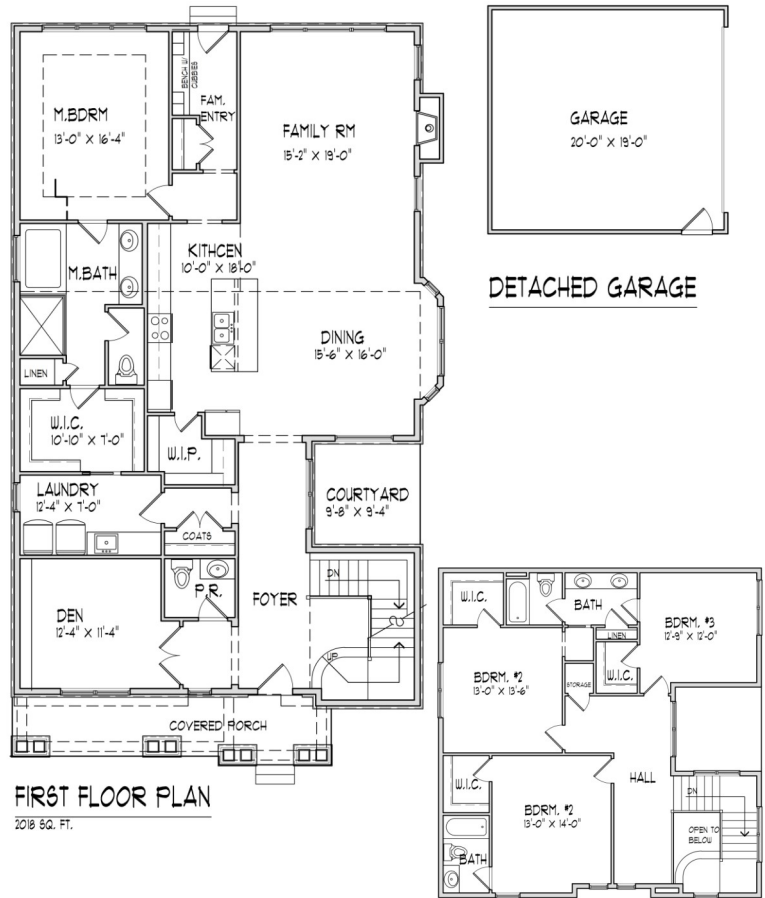
PLYMOUTH, MICHIGAN 48170

2,992 SF // 4 Bedroom // 3.1 bath // \$685,900



KEY FEATURES

- Open kitchen with custom cabinetry and granite island with snack bar extension
- High-end granite countertops with custom ceramic back-splash
- Breakfast nook and large pantry
- Stainless steel appliances
- Open family room with gas fireplace with custom ceramic tile surround and recessed lighting
- Private interior courtyard
- Nine-foot ceilings and custom flooring on the first floor
- Windows placed to maximize natural light
- First floor master suite with walk-in closet
- Bathroom with dual sinks and granite countertop, custom tile flooring, large shower with bench and custom tile
- Plush carpet on second floor
- First floor laundry
- Large mud room with seating and storage
- Eight-foot basement ceilings with egress window
- High-efficiency furnace and central air
- Custom entry doors
- Lawn sprinklers, sod to be installed



FIRST FLOOR PLAN
2018 SQ. FT.

SECOND FLOOR PLAN
1235 SQ. FT.

HOMES OF
Elegance

walkablecommunities.com

23370 Commerce Drive // Farmington Hills Michigan 48335 // 248-426-5652

In the builder's effort to meet homebuyer's expectations, we reserve the right to modify features, price, specifications And/or to change or discontinue models without notice or obligation. The artist's drawings of the elevation and floor plan are not an exact representation or drawn to scale. Specific details such as doors, windows, walls and other features depicted herein will vary depending on elevation style and options selected. Photos are of similar homes.

Copyright 2016 Homes of Elegance Walkable Communities 03/30/16

